

4

3

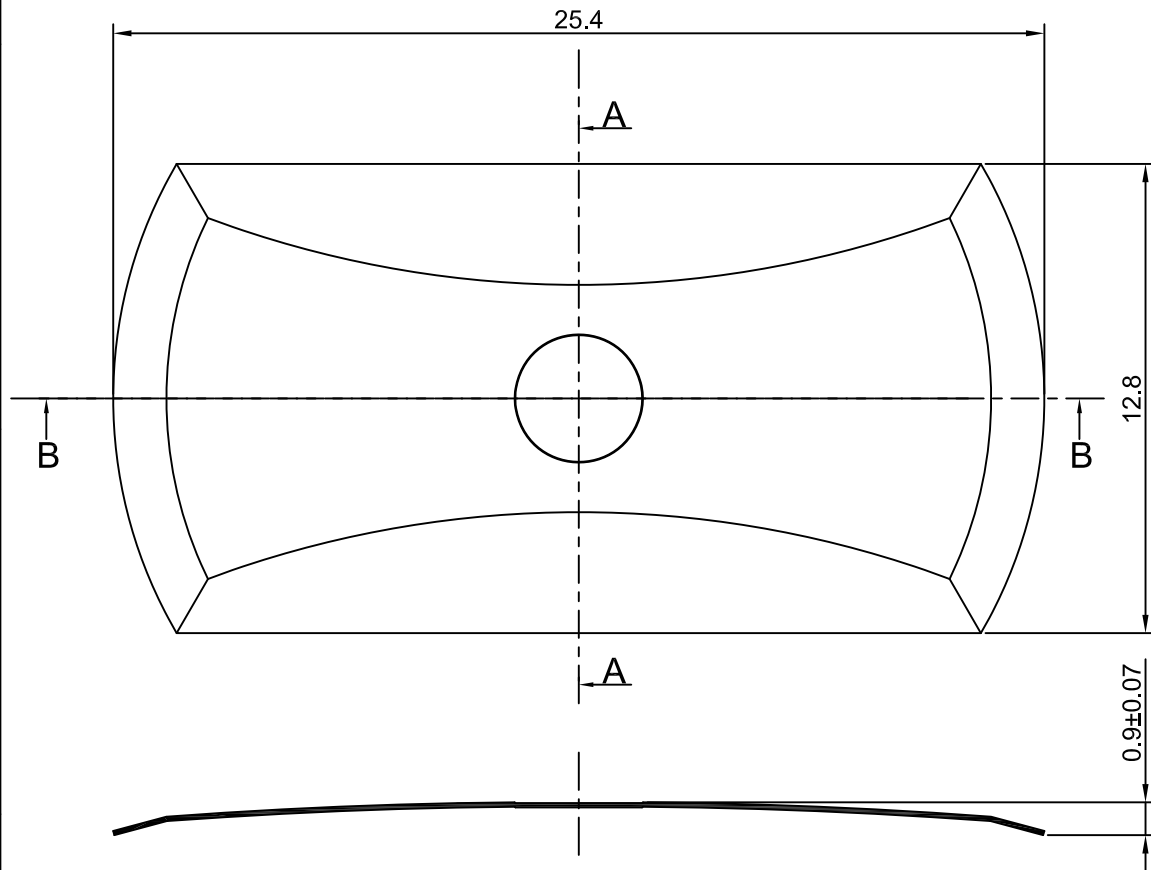
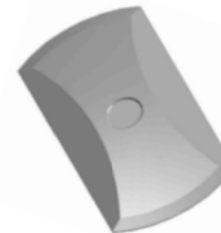
2

1

CROWN LINK[®]

專業薄膜開關連接器第一品牌

ROHS



◆ SPECIFICATIONS

TRIP FORCE: 350 ± 30 g

CLICK RATIO: MIN 45 %

◆ TESTING CONDITIONS

FORCE TEST PROBE: HARD POINTED

LIFE TEST PROBE: RB 60° SILICON ROUND HEAD

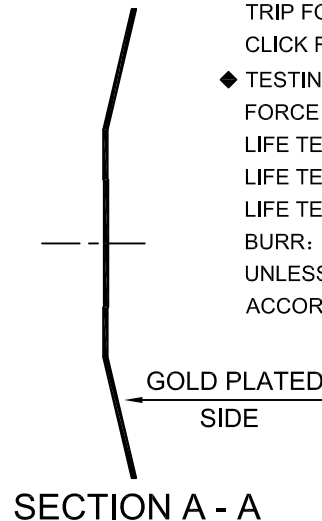
LIFE TEST FORCE: 440 g

LIFE TEST SPEED: 180 CYCLE / MIN

BURR: MAX 0.05 MM

UNLESS OTHERWISE SPECIFIED TESTING METHOD

ACCORDING TO CROWNLINK STANDARD PROCEDURE



SECTION B - B

				X.XX ±0.10
A	FIRST DRAWING	ANNIE	2013.07.18	
REV/版本	MODIFIED CONTENT /變更內容	DRAWN/繪圖	DATE/日期	TOLERANCE RANGE/公差範圍

DRAWN/繪圖	ANNIE	DATE/日期	2013.07.18	CROWN LINK[®] THE LEADING MANUFACTURER OF FPC & FFC CONNECTOR, HOUSING AND DOME.					
CHECK BY/審查	VIVIAN	DATE/日期	2013.07.18	PRODUCT NAME/品名 METAL DOME					
APPROVED BY/核准	JASON	DATE/日期	2013.07.18	PART NO./料號	THICKNESS/厚度	SCALE/比例	SIZE/圖號	UNIT/單位	
PACKAGE/包裝	10,000PCS/BAG	CL25.4-EGD-350T	0.12 mm	5:1	A4	mm			
				MATERIAL/材質	ANGLE OF VIEW/視角	SHEET/頁碼	REV/版本		
				SINGLE SIDE GOLD PLATED	45°	1 OF 1	A		
				STAINLESS STEEL SUS 304					