

4

3

2

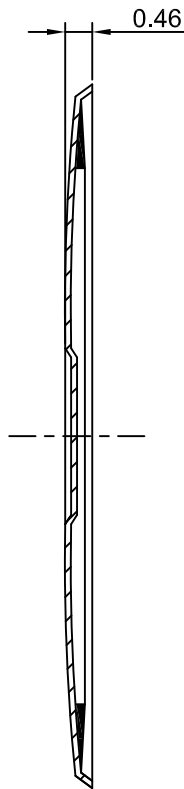
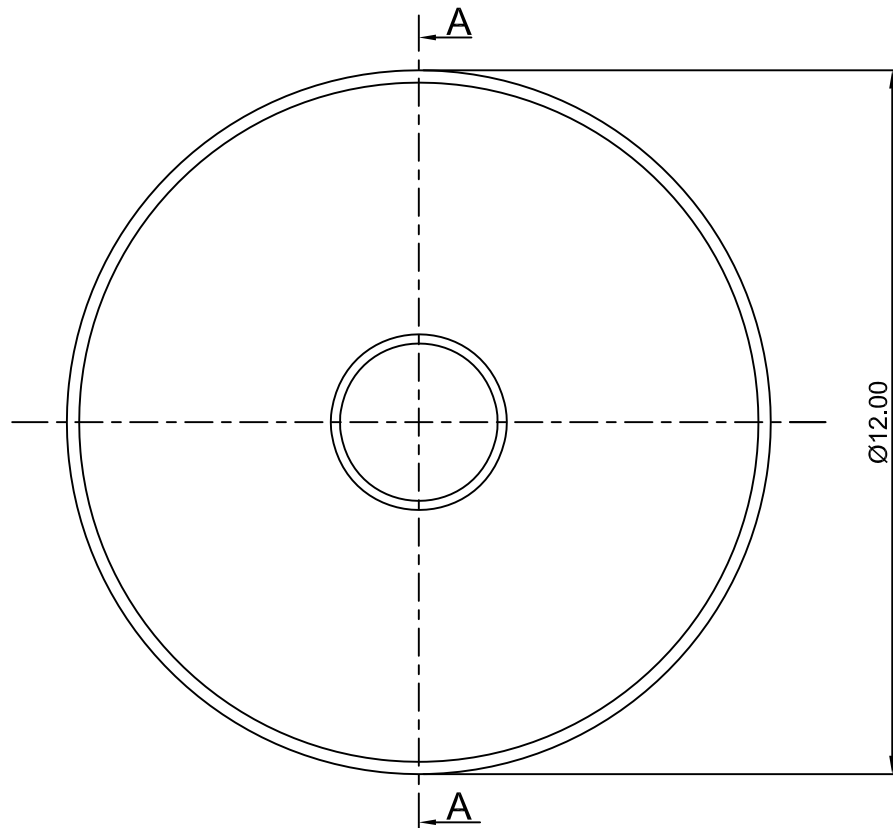
1

# CROWN LINK<sup>®</sup>

專業薄膜開關連接器第一品牌



ROHS



SECTION-A-A

◆ SPECIFICATIONS

TRIP FORCE: 350 ± 30 g

CLICK RATIO: MIN 45 %

◆ TESTING CONDITIONS

FORCE TEST PROBE: HARD POINTED

LIFE TEST PROBE: RB 60° SILICON ROUND HEAD

LIFE TEST FORCE: 420 g

LIFE TEST SPEED: 180 CYCLE / MIN

BURR: MAX 0.05 MM

UNLESS OTHERWISE SPECIFIED TESTING METHOD

ACCORDING TO CROWNLINK STANDARD PROCEDURE

△ DOME REST SURFACE.



NORMAL DESIGN: CONTACT POINT ALIGN WITH DOME REST SURFACE, WEAKER TACTILE FEELING DURING CONTACT MADE.

△ DOME REST SURFACE.



OVER TRAVEL DESIGN: OVER TRAVEL ALLOWABLE, CONTACT POINT AT 0.1 mm BELOW DOME REST SURFACE.

D	ADD APPLICATION EXAMPLE	ANNIE	2013.08.21	X.XX ±0.10
C	NEW DRAWING FORMAT, CORRECT DIMPLE DEPTH & DIAMETER	ANNIE	2008.10.19	
A	FIRST RELEASE	ANNIE	2005.03.20	
REV/版本	MODIFIED CONTENT /變更內容	DRAWN/繪圖	DATE/日期	

DRAWN/繪圖	DATE/日期	<b>CROWN LINK<sup>®</sup> THE LEADING MANUFACTURER OF FPC &amp; FFC CONNECTOR, HOUSING AND DOME.</b>				
ANNIE	2013.08.21	PRODUCT NAME/品名				
CHECK BY/審查	DATE/日期	METAL DOME				
VIVIAN	2013.08.21	PART NO./料號	THICKNESS/厚度	SCALE/比例	SIZE/圖號	UNIT/單位
APPROVED BY/核准	DATE/日期	CL12-RSD-350T	0.10 mm	10:1	A4	mm
JASON	2013.08.21	MATERIAL/材質		ANGLE OF VIEW/視角	SHEET/頁碼	REV/版本
PACKAGE/包裝	10,000PCS/BAG	STAINLESS STEEL SUS 304		1 OF 1	1 OF 1	D

D

D

C

C

B

B

A

A