

4

3

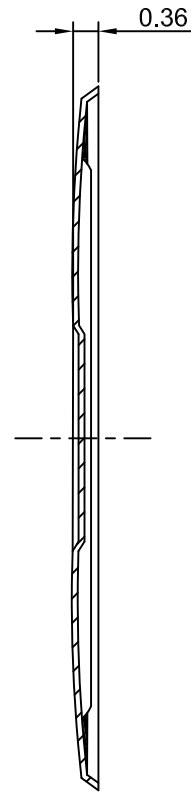
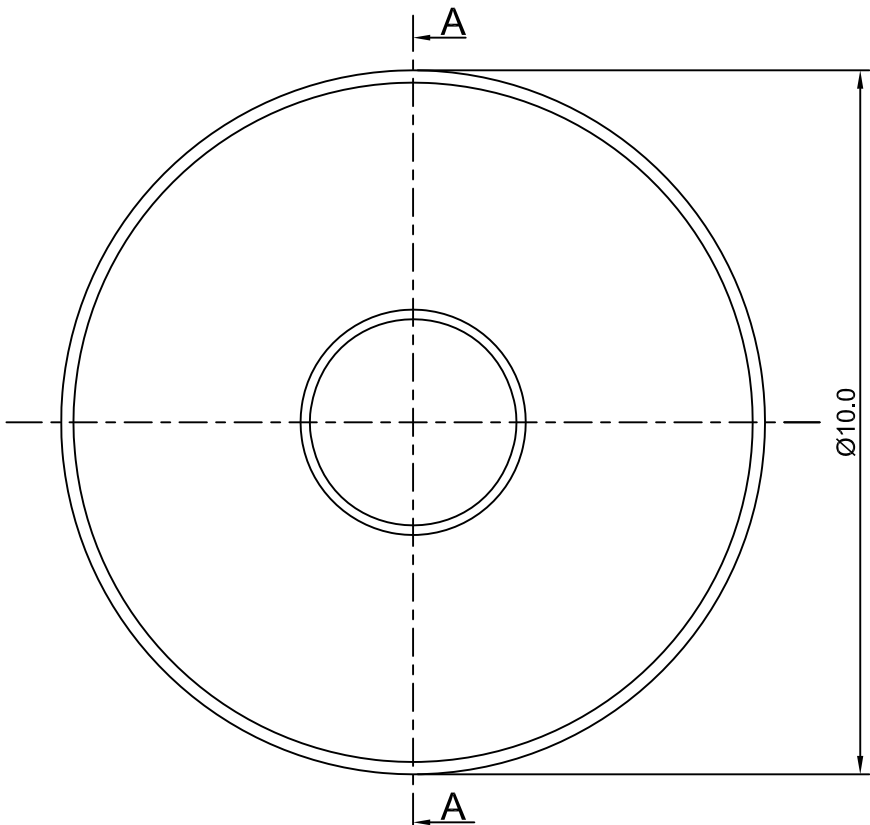
2

1

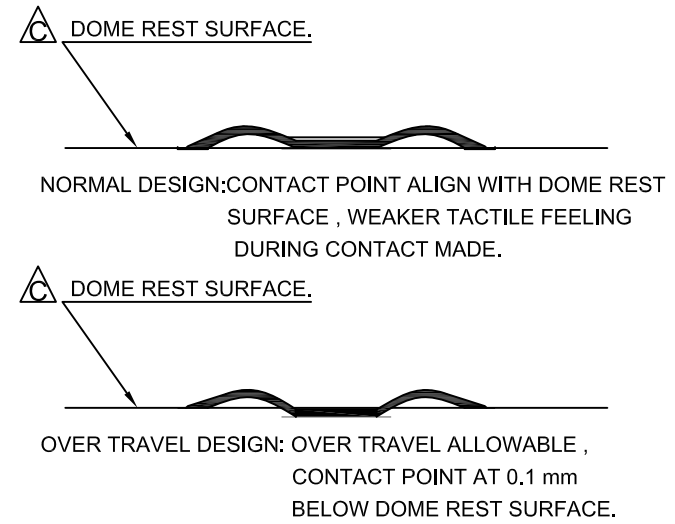
# CROWN LINK<sup>®</sup>

專業薄膜開關連接器第一品牌

ROHS



- ◆ SPECIFICATIONS
  - TRIP FORCE: 240 ± 30 g
  - CLICK RATIO: MIN 35 %
- ◆ TESTING CONDITIONS
  - FORCE TEST PROBE: HARD POINTED
  - LIFE TEST PROBE: RB 60° SILICON ROUND HEAD
  - LIFE TEST FORCE: 300 g
  - LIFE TEST SPEED: 180 CYCLE / MIN
  - BURR: MAX 0.05 MM
  - UNLESS OTHERWISE SPECIFIED TESTING METHOD ACCORDING TO CROWNLINK STANDARD PROCEDURE



SECTION A-A

C	ADD APPLICATION EXAMPLE	ANNIE	2013.08.21	X.XX ±0.10
B	NEW DRAWING FORMAT	ANNIE	2008.10.19	
A	FIRST DRAWING	ANNIE	2005.03.20	
REV/版本	MODIFIED CONTENT /變更內容	DRAWN/繪圖	DATE/日期	

DRAWN/繪圖	DATE/日期	<b>CROWN LINK<sup>®</sup> THE LEADING MANUFACTURER OF FPC &amp; FFC CONNECTOR, HOUSING AND DOME.</b>				
ANNIE	2013.08.21	PRODUCT NAME/品名				
CHECK BY/審查	DATE/日期	METAL DOME				
VIVIAN	2013.08.21	PART NO./料號	THICKNESS/厚度	SCALE/比例	SIZE/圖號	UNIT/單位
APPROVED BY/核准	DATE/日期	CL10-RSD-240T	0.10 mm	10:1	A4	mm
JASON	2013.08.21	MATERIAL/材質		ANGLE OF VIEW/視角	SHEET/頁碼	REV/版本
PACKAGE/包裝	10,000PCS/BAG	STAINLESS STEEL SUS 304		1 OF 1	1 OF 1	C

