

4

3

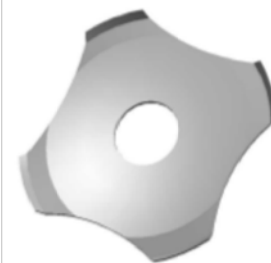
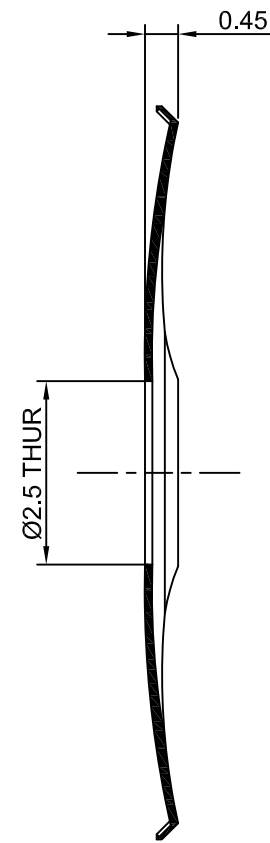
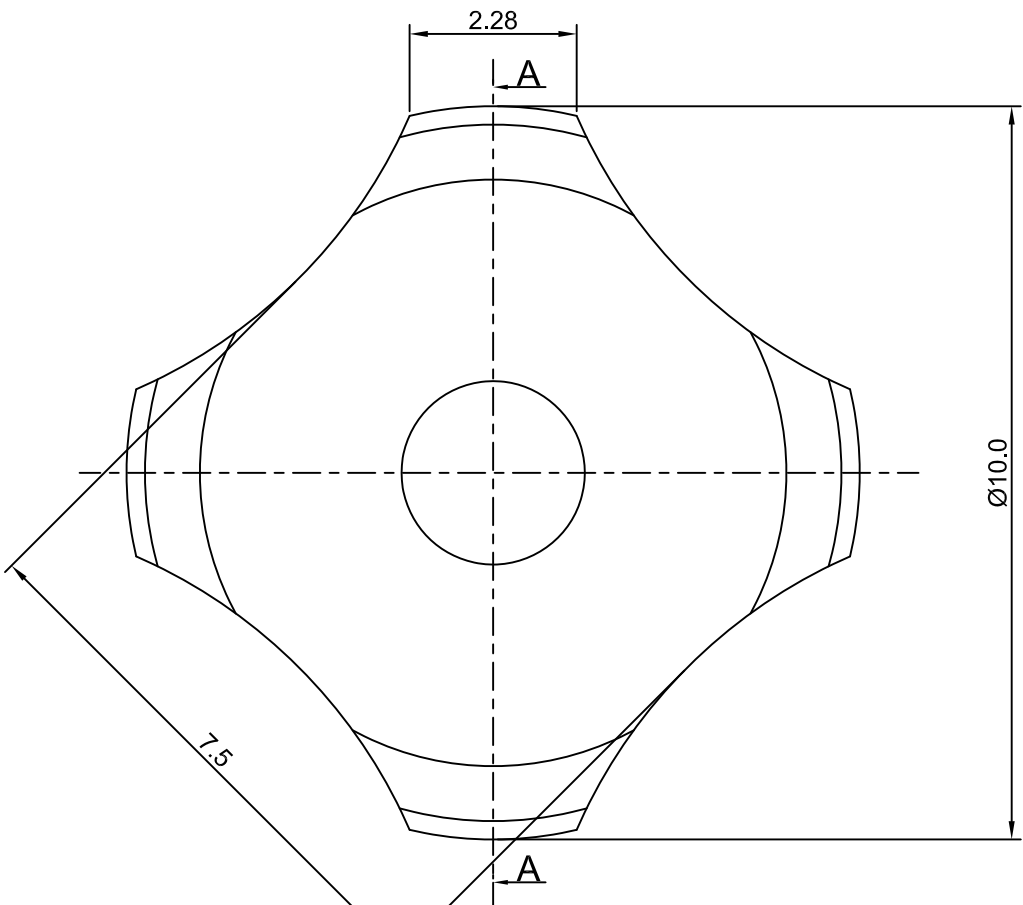
2

1

# CROWN LINK<sup>®</sup>

專業薄膜開關連接器第一品牌

ROHS



- ◆ SPECIFICATIONS
  - TRIP FORCE: 280 ± 30 g
  - CLICK RATIO: MIN 35 %
- ◆ TESTING CONDITIONS
  - FORCE TEST PROBE: HARD POINTED
  - LIFE TEST PROBE: RB 60° SILICON ROUND HEAD
  - LIFE TEST FORCE: 340 g
  - LIFE TEST SPEED: 180 CYCLE / MIN
  - BURR: MAX 0.05 MM
  - UNLESS OTHERWISE SPECIFIED TESTING METHOD ACCORDING TO CROWNLINK STANDARD PROCEDURE

SECTION A - A

				X.XX ±0.10
A	FIRST DRAWING	ANNIE	2012.04.02	
REV/版本	MODIFIED CONTENT /變更內容	DRAWN/繪圖	DATE/日期	
TOLERANCE RANGE/公差範圍				

DRAWN/繪圖	DATE/日期	<b>CROWN LINK<sup>®</sup> THE LEADING MANUFACTURER OF FPC &amp; FFC CONNECTOR, HOUSING AND DOME.</b>				
CHECK BY/審查	DATE/日期	PRODUCT NAME/品名 METAL DOME				
APPROVED BY/核准	DATE/日期	PART NO./料號	THICKNESS/厚度	SCALE/比例	SIZE/圖號	UNIT/單位
JASON	2013.04.02	CL10-QNH-280T	0.10 mm	10:1	A4	mm
PACKAGE/包裝	10,000PCS/BAG	MATERIAL/材質 DOUBLE SIDE NICKEL PLATED STAINLESS STEEL SUS 304		ANGLE OF VIEW/視角	SHEET/頁碼	REV/版本
				10°	1 OF 1	A

D

D

C

C

B

B

A

A