

4

3

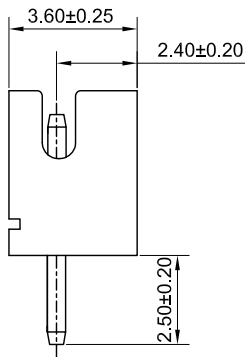
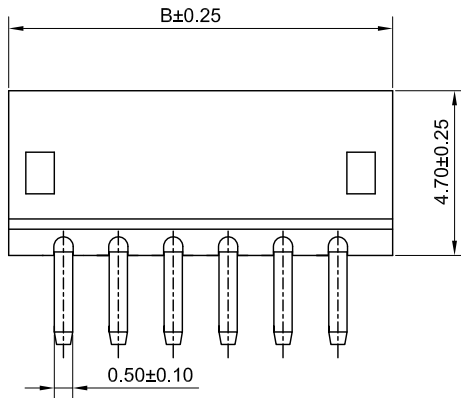
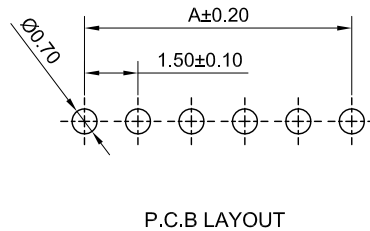
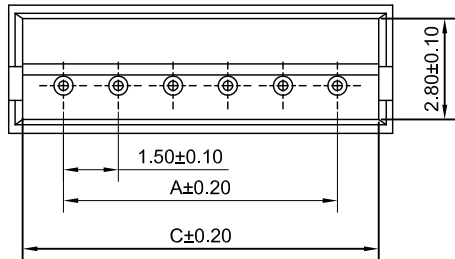
2

1

# CROWN LINK<sup>®</sup>

專業薄膜開關連接器第一品牌

ROHS



- ◆ FOR 1502H HOUSING
- ◆ SPECIFICATIONS
  - VOLTAGE RATING: 100V AC, DC
  - CURRENT RATING: 1A AC, DC
  - CONTACT RESISTANCE: 20 mΩ MAX
  - INSULATION RESISTANCE: 500 MΩ MIN
  - WITHSTANDING VOLTAGE: 500V AC / MINUTE
- ◆ ENVIRONMENTAL
  - TEMPERATURE RANGE: -25°C ~ +85°C
- ◆ PART NO.
  - CL1502 V - XX N H
  - ANGLE 180°
  - MOLD NO.
  - NO LOGO
  - CIRCUITS NUMBER 02 TO 20
  - SERIES NO.

Part NO.	Dimensions			Part NO.	Dimensions		
	A	B	C		A	B	C
02	1.50	4.50	3.70	12	16.50	19.50	18.70
03	3.00	6.00	5.20	13	18.00	21.00	20.20
04	4.50	7.50	6.70	14	19.50	22.50	21.70
05	6.00	9.00	8.20	15	21.00	24.00	23.20
06	7.50	10.50	9.70	16	22.50	25.50	24.70
07	9.00	12.00	11.20	17	24.00	27.00	26.20
08	10.50	13.50	12.70	18	25.50	28.50	27.70
09	12.00	15.00	14.20	19	27.00	30.00	29.20
10	13.50	16.50	15.70	20	28.50	31.50	30.70
11	15.00	18.00	17.20				

REV/版本	MODIFIED CONTENT /變更內容	DRAWN/繪圖	DATE/日期	TOLERANCE RANGE/公差範圍
				X ±0.50 X.* ±3° X ±0.30 X.* ±2° .XX ±0.20 .XX.* ±1° .XXX ±0.10 .XXX.* ±0.5°

DRAWN/繪圖 JUDY	DATE/日期 2023.08.24	<b>CROWN LINK<sup>®</sup> THE LEADING MANUFACTURER OF FPC &amp; FFC CONNECTOR, HOUSING AND DOME.</b>				
CHECK BY/審查 VIVIAN	DATE/日期 2023.08.24	PRODUCT NAME/品名 1.50mm PITCH 180° WAFER				
APPROVED BY/核准 WENDY	DATE/日期 2023.08.24	PART NO./料號 CL1502V-XXNH	PIN NUMBER/針數 02-20PIN	SCALE/比例 3:1	SIZE/圖號 A4	UNIT/單位 mm
PACKAGE/包裝	2,000PCS/BAG	MATERIAL/材質 BRASS TIN PA46 UL94V-0	COLOR/顏色 NATURAL	ANGLE OF VIEW/視角 	SHEET/頁碼 1 OF 1	REV/版本 C