

4

3

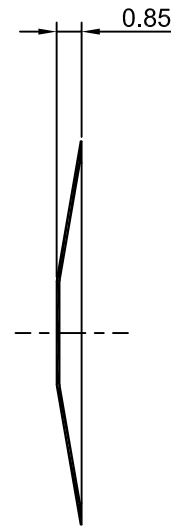
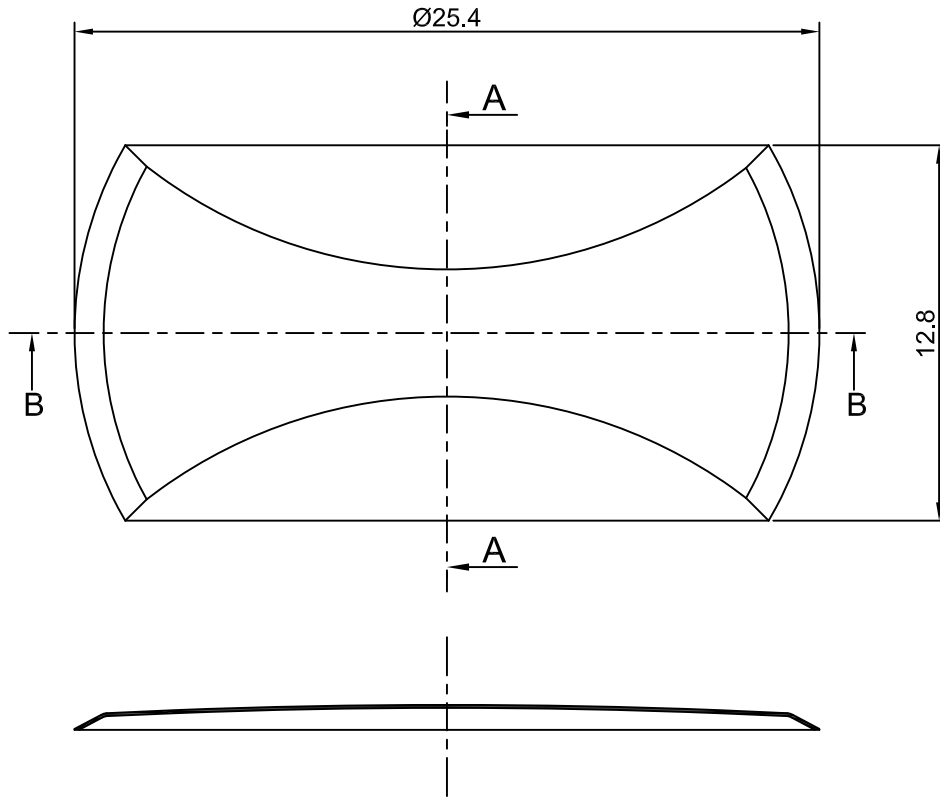
2

1

CROWN LINK[®]

專業薄膜開關連接器第一品牌

ROHS



SECTION A - A



◆ SPECIFICATIONS

TRIP FORCE: 290 ± 30 g
 CLICK RATIO: MIN 45 %

◆ TESTING CONDITIONS

FORCE TEST PROBE: HARD POINTED
 LIFE TEST PROBE: RB 60° SILICON ROUND HEAD
 LIFE TEST FORCE: 350 g
 LIFE TEST SPEED: 180 CYCLE / MIN
 BURR: MAX 0.05 MM
 UNLESS OTHERWISE SPECIFIED TESTING METHOD
 ACCORDING TO CROWNLINK STANDARD PROCEDURE

SECTION B - B

				X.XX ±0.10
A	FIRST DRAWING	ANNIE	2013.08.16	
REV/版本	MODIFIED CONTENT /變更內容	DRAWN/繪圖	DATE/日期	
				TOLERANCE RANGE/公差範圍

DRAWN/繪圖	DATE/日期	CROWN LINK[®] THE LEADING MANUFACTURER OF FPC & FFC CONNECTOR, HOUSING AND DOME.			
ANNIE	2013.08.16	PRODUCT NAME/品名 METAL DOME			
CHECK BY/審查	DATE/日期	PART NO./料號	THICKNESS/厚度	SCALE/比例	SIZE/圖號
VIVIAN	2013.08.16	CL25.4-ESN-290T	0.10 mm	6:1	A4
APPROVED BY/核准	DATE/日期	MATERIAL/材質	ANGLE OF VIEW/視角	SHEET/頁碼	REV/版本
JASON	2013.08.16	STAINLESS STEEL SUS 304	⊕	1 OF 1	A
PACKAGE/包裝	10,000PCS/BAG				