

4

3

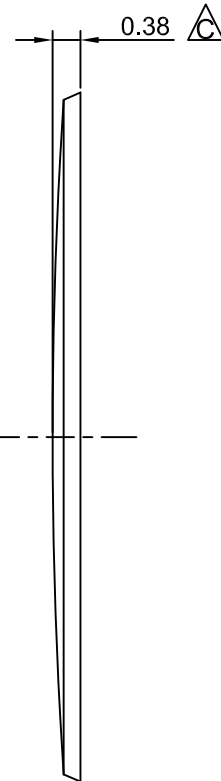
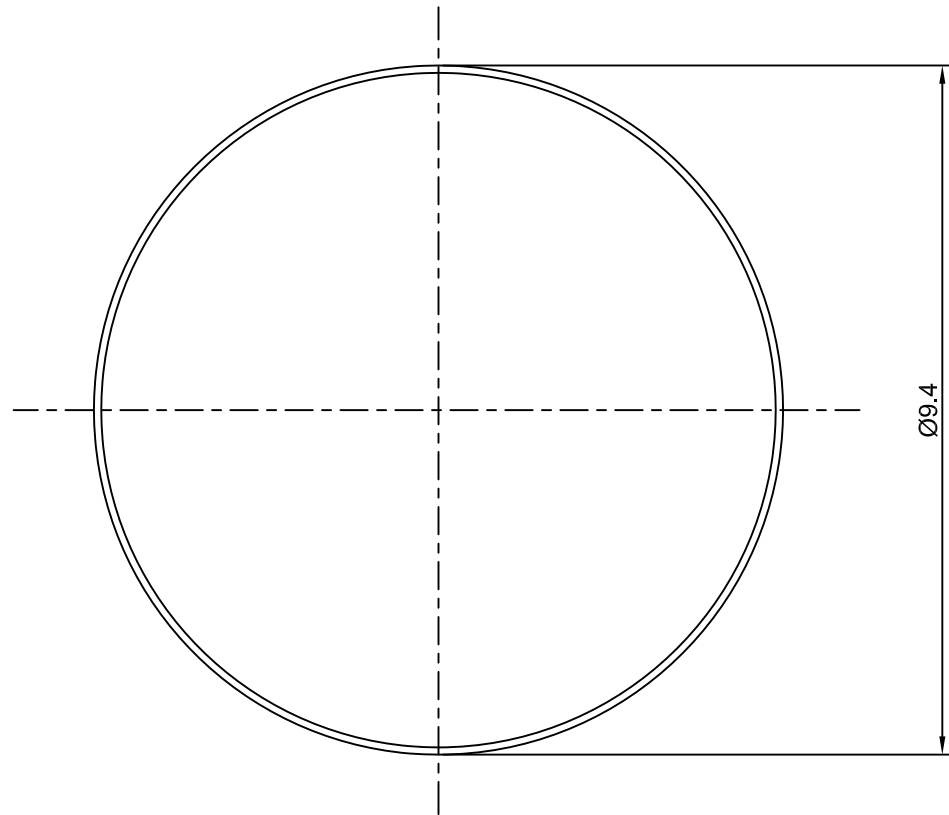
2

1

CROWN LINK[®]

專業薄膜開關連接器第一品牌

ROHS



◆ SPECIFICATIONS

TRIP FORCE: 260 ± 30 g
CLICK RATIO: MIN 30 %

◆ TESTING CONDITIONS

FORCE TEST PROBE: HARD POINTED
LIFE TEST PROBE: RB 60° SILICON ROUND HEAD
LIFE TEST FORCE: 320 g
LIFE TEST SPEED: 180 CYCLE / MIN
BURR: MAX 0.05 MM
UNLESS OTHERWISE SPECIFIED TESTING METHOD
ACCORDING TO CROWNLINK STANDARD PROCEDURE

| | | | | |
|--------|--|----------|------------|------------|
| C | NEW DRAWING FORMAT & CORRECT DRAWING MISTAKE | ANNIE | 2013.08.22 | X.XX ±0.10 |
| B | REVISE RELEASE FORCE | ANNIE | 2005.02.25 | |
| A | FIRST DRAWING | ANNIE | 2004.02.20 | |
| REV/版本 | MODIFIED CONTENT /變更內容 | DRAWN/繪圖 | DATE/日期 | |

| | | | | | | |
|----------------|---------------|--|--------------|------------------|----------|---------|
| DRAWN/繪圖 | DATE/日期 | CROWN LINK[®] THE LEADING MANUFACTURER OF FPC & FFC CONNECTOR, HOUSING AND DOME. | | | | |
| ANNIE | 2013.08.22 | PRODUCT NAME/品名 METAL DOME | | | | |
| CHECK BY/審查 | DATE/日期 | PART NO./料號 | THICKNESS/厚度 | SCALE/比例 | SIZE/圖號 | UNIT/單位 |
| VIVIAN | 2013.08.22 | CL9.4-RSN-260T | 0.08 mm | 10:1 | A4 | mm |
| APPROVED BY/核准 | DATE/日期 | MATERIAL/材質 | | ANGLE OF VIEW/視角 | SHEET/頁碼 | REV/版本 |
| JASON | 2013.08.22 | STAINLESS STEEL SUS 304 | | 1 OF 1 | 1 OF 1 | C |
| PACKAGE/包裝 | 10,000PCS/BAG | | | | | |

