

4

3

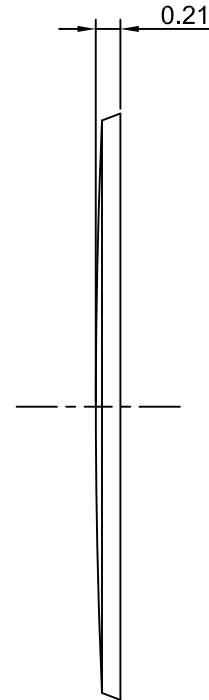
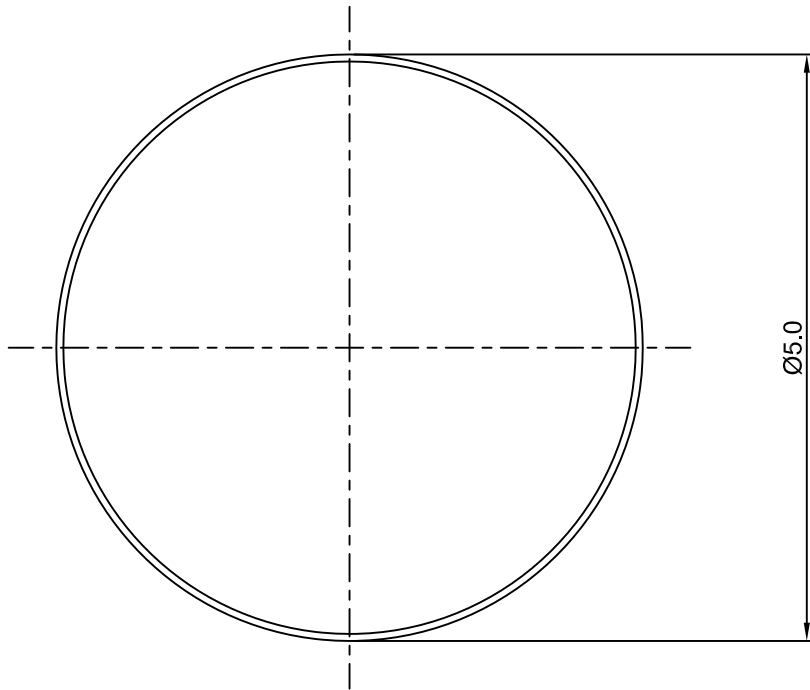
2

1

# CROWN LINK<sup>®</sup>

專業薄膜開關連接器第一品牌

ROHS



◆ SPECIFICATIONS

TRIP FORCE: 180 ± 30 g

CLICK RATIO: MIN 30 %

◆ TESTING CONDITIONS

FORCE TEST PROBE: HARD POINTED

LIFE TEST PROBE: RB 60° SILICON ROUND HEAD

LIFE TEST FORCE: 230 g

LIFE TEST SPEED: 180 CYCLE / MIN

BURR: MAX 0.05 MM

UNLESS OTHERWISE SPECIFIED TESTING METHOD

ACCORDING TO CROWN LINK STANDARD PROCEDURE

|        |                        |          |            |                      |
|--------|------------------------|----------|------------|----------------------|
|        |                        |          |            | X.XX ±0.10           |
| B      | NEW DRAWING FORMAT     | ANNIE    | 2013.08.27 |                      |
| A      | FIRST DRAWING          | ANNIE    | 2004.02.20 |                      |
| REV/版本 | MODIFIED CONTENT /變更內容 | DRAWN/繪圖 | DATE/日期    |                      |
|        |                        |          |            | TOLERANCE RANGE/公差範圍 |

|                |               |  |              |                  |          |         |
|----------------|---------------|--|--------------|------------------|----------|---------|
| DRAWN/繪圖       | DATE/日期       | <b>CROWN LINK<sup>®</sup> THE LEADING MANUFACTURER OF FPC &amp; FFC CONNECTOR, HOUSING AND DOME.</b> |              |                  |          |         |
| ANNIE          | 2013.08.27    | PRODUCT NAME/品名  |              |                  |          |         |
| CHECK BY/審查    | DATE/日期       | METAL DOME   |              |                  |          |         |
| VIVIAN         | 2013.08.27    | PART NO./料號  | THICKNESS/厚度 | SCALE/比例         | SIZE/圖號  | UNIT/單位 |
| APPROVED BY/核准 | DATE/日期       | CL5-RNN-180T   | 0.06 mm      | 16:1             | A4       | mm      |
| JASON          | 2013.08.27    | MATERIAL/材質  |              | ANGLE OF VIEW/視角 | SHEET/頁碼 | REV/版本  |
| PACKAGE/包裝     | 10,000PCS/BAG | DOUBLE SIDE NICKEL PLATED<br>STAINLESS STEEL SUS 304   |              | 1 OF 1           | 1 OF 1   | B       |

D

D

C

C

B

B

A

A