

4

3

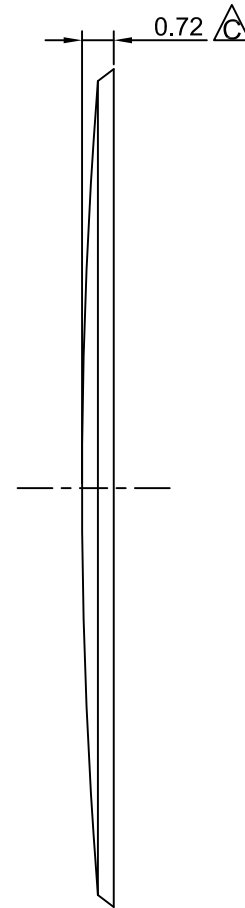
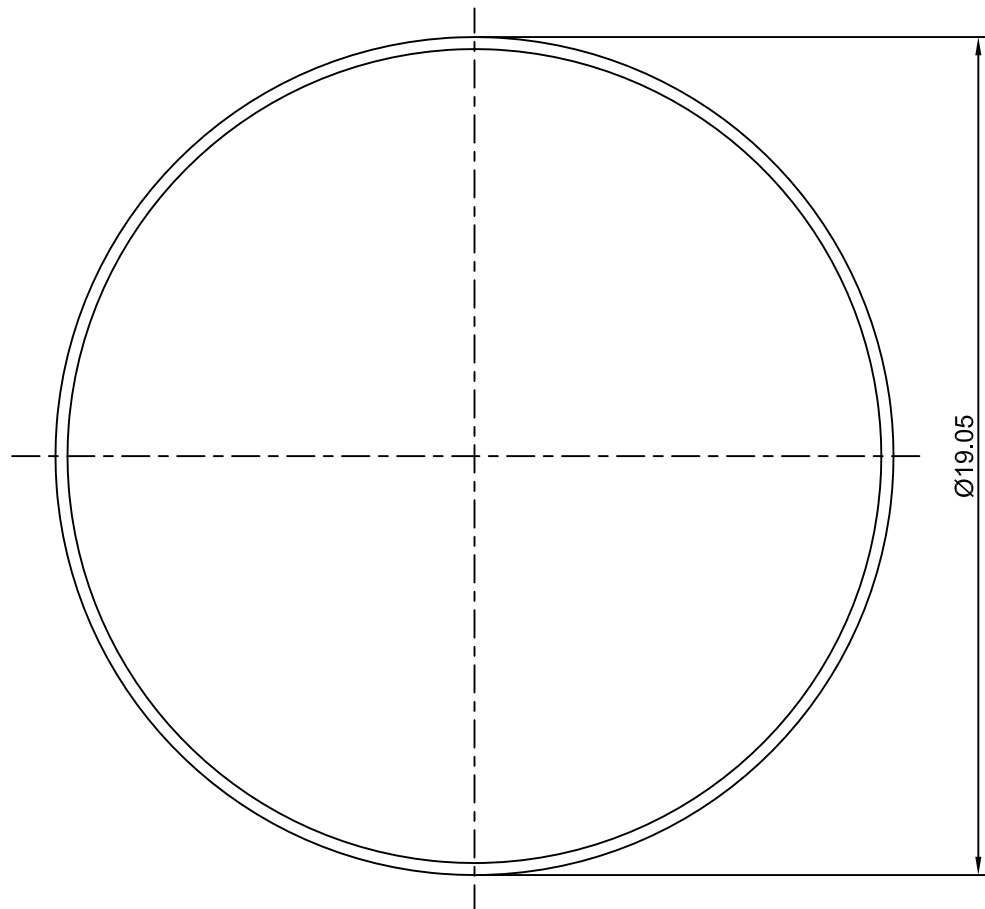
2

1

# CROWN LINK<sup>®</sup>

專業薄膜開關連接器第一品牌

ROHS



◆ SPECIFICATIONS

TRIP FORCE: 600 ± 50 g

CLICK RATIO: MIN 15 %

◆ TESTING CONDITIONS

FORCE TEST PROBE: HARD POINTED

LIFE TEST PROBE: RB 60° SILICON ROUND HEAD

LIFE TEST FORCE: 715 g

LIFE TEST SPEED: 180 CYCLE / MIN

BURR: MAX 0.05 MM

UNLESS OTHERWISE SPECIFIED TESTING METHOD

ACCORDING TO CROWNLINK STANDARD PROCEDURE

|        |  |          |            |            |
|--------|--|----------|------------|------------|
| C      | NEW DRAWING FORMAT & CORRECT DOME HEIGHT | ANNIE    | 2013.08.23 | X.XX ±0.10 |
| B      | CONVERT TO NEW DRAWING FORMAT            | ANNIE    | 2012.07.08 |            |
| A      | FIRST DRAWING                            | ANNIE    | 2006.02.20 |            |
| REV/版本 | MODIFIED CONTENT /變更內容                   | DRAWN/繪圖 | DATE/日期    |            |

|                |               |  |                  |          |          |         |
|----------------|---------------|--|------------------|----------|----------|---------|
| DRAWN/繪圖       | DATE/日期       | <b>CROWN LINK<sup>®</sup> THE LEADING MANUFACTURER OF FPC &amp; FFC CONNECTOR, HOUSING AND DOME.</b> |                  |          |          |         |
| ANNIE          | 2013.08.23    | PRODUCT NAME/品名  |                  |          |          |         |
| CHECK BY/審查    | DATE/日期       | METAL DOME   |                  |          |          |         |
| VIVIAN         | 2013.08.23    | PART NO./料號  | THICKNESS/厚度     | SCALE/比例 | SIZE/圖號  | UNIT/單位 |
| APPROVED BY/核准 | DATE/日期       | CL19-RSN-600T  | 0.12 mm          | 6:1      | A4       | mm      |
| JASON          | 2013.08.23    | MATERIAL/材質  | ANGLE OF VIEW/視角 |          | SHEET/頁碼 | REV/版本  |
| PACKAGE/包裝     | 10,000PCS/BAG | STAINLESS STEEL SUS 304  |                  |          | 1 OF 1   | C       |

D

D

C

C

B

B

A

A