

4

3

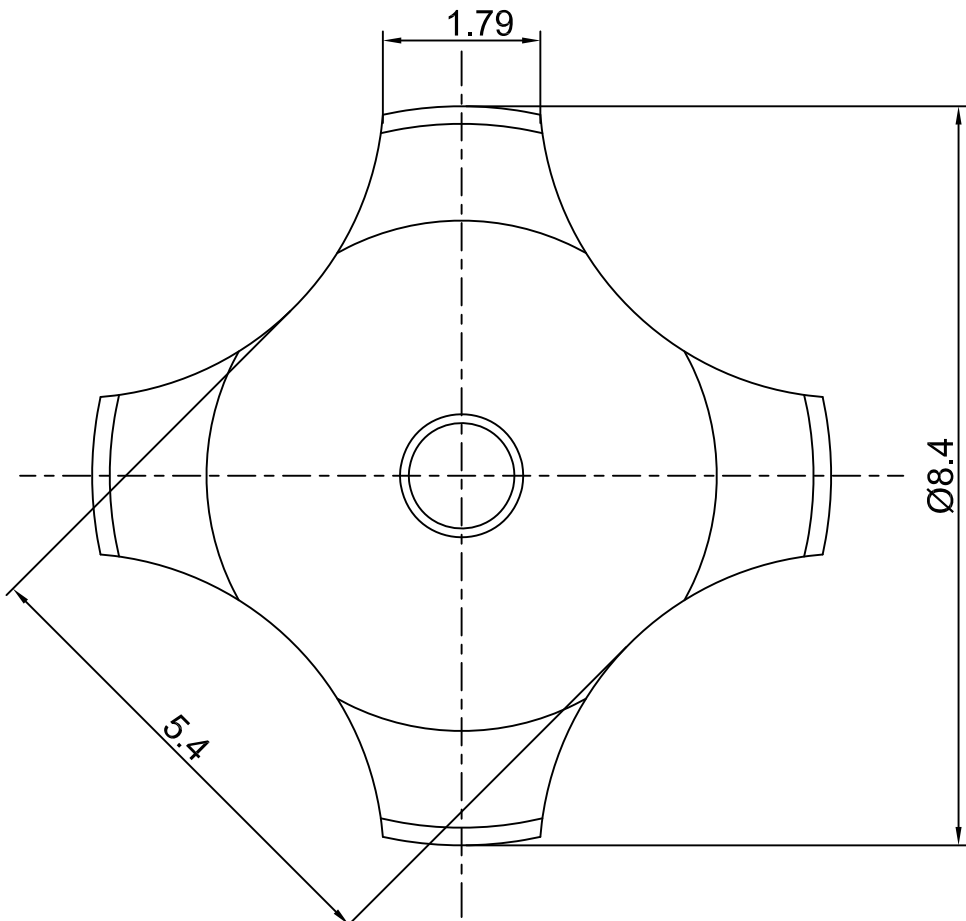
2

1

CROWN LINK[®]

專業薄膜開關連接器第一品牌

ROHS



- ◆ SPECIFICATIONS
TRIP FORCE: 200 ± 30 g
CLICK RATIO: MIN 35 %
- ◆ TESTING CONDITIONS
FORCE TEST PROBE: HARD POINTED
LIFE TEST PROBE: RB 60° SILICON ROUND HEAD
LIFE TEST FORCE: 255 g
LIFE TEST SPEED: 180 CYCLE / MIN
BURR: MAX 0.05 MM
UNLESS OTHERWISE SPECIFIED TESTING METHOD
ACCORDING TO CROWNLINK STANDARD PROCEDURE

C	NEW DRAWING FORMAT & CORRECT DIMENSIONS	ANNIE	2012.11.20
B	CONVERT TO NEW DRAWING FORMAT & REVISE DOME HEIGHT	ANNIE	2005.03.02
A	FIRST DRAWING	ANNIE	2003.06.15
REV/版本	MODIFIED CONTENT /變更內容	DRAWN/繪圖	DATE/日期

X.XX ± 0.10
TOLERANCE RANGE/公差範圍

DRAWN/繪圖 ANNIE	DATE/日期 2012.11.20	CROWN LINK[®] THE LEADING MANUFACTURER OF FPC & FFC CONNECTOR, HOUSING AND DOME.				
CHECK BY/審查 VIVIAN	DATE/日期 2012.11.20	PRODUCT NAME/品名 METAL DOME				
APPROVED BY/核准 JASON	DATE/日期 2012.11.20	PART NO./料號 CL8.4-QSD-200T	THICKNESS/厚度 0.08 mm	SCALE/比例 12:1	SIZE/圖號 A4	UNIT/單位 mm
PACKAGE/包裝 10,000PCS/BAG		MATERIAL/材質 STAINLESS STEEL SUS 304		ANGLE OF VIEW/視角 	SHEET/頁碼 1 OF 1	REV/版本 C