

4

3

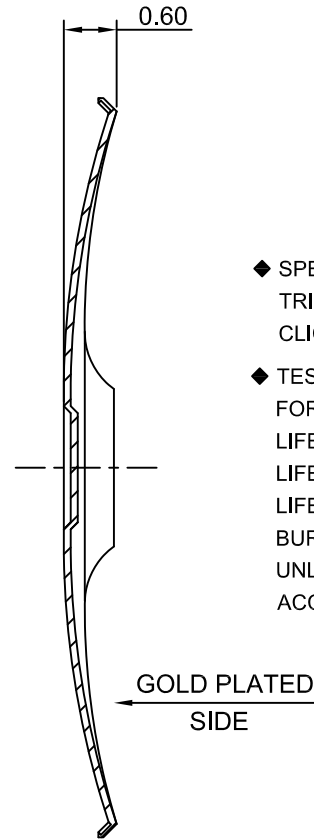
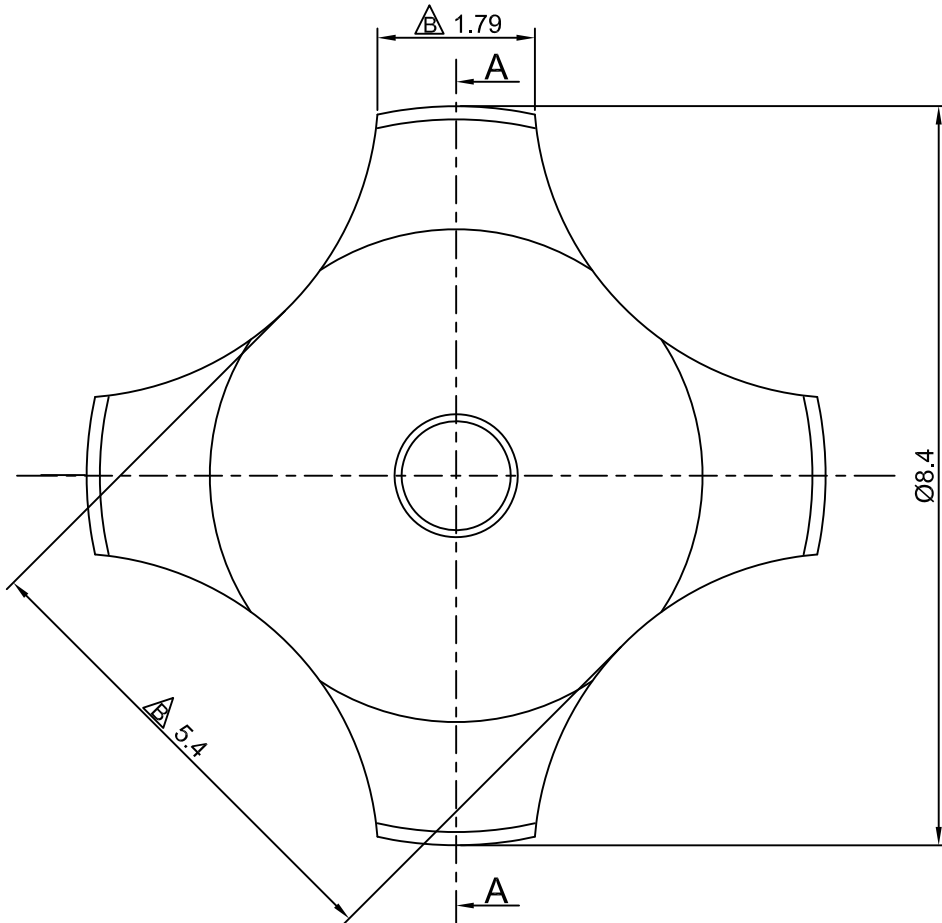
2

1

CROWN LINK[®]

專業薄膜開關連接器第一品牌

ROHS



◆ SPECIFICATIONS

TRIP FORCE: 400 ± 30 g
CLICK RATIO: MIN 45 %

◆ TESTING CONDITIONS

FORCE TEST PROBE: HARD POINTED
LIFE TEST PROBE: RB 60° SILICON ROUND HEAD
LIFE TEST FORCE: 475 g
LIFE TEST SPEED: 180 CYCLE / MIN
BURR: MAX 0.05 MM
UNLESS OTHERWISE SPECIFIED TESTING METHOD
ACCORDING TO CROWNLINK STANDARD PROCEDURE

SECTION-A-A

| | | | | |
|--------|---|----------|------------|----------------------|
| | | | | X.XX ±0.10 |
| B | NEW DRAWING FORMAT & CORRECT DRAWING MISTAKE HEIGHT | ANNIE | 2012.12.04 | |
| A | FIRST DRAWING | ANNIE | 2006.01.07 | |
| REV/版本 | MODIFIED CONTENT /變更內容 | DRAWN/繪圖 | DATE/日期 | |
| | | | | TOLERANCE RANGE/公差範圍 |

| | | | | | | |
|----------------|---------------|--|--------------|------------------|----------|---------|
| DRAWN/繪圖 | DATE/日期 | CROWN LINK[®] THE LEADING MANUFACTURER OF FPC & FFC CONNECTOR, HOUSING AND DOME. | | | | |
| ANNIE | 2012.12.04 | PRODUCT NAME/品名 | | | | |
| CHECK BY/審查 | DATE/日期 | METAL DOME | | | | |
| VIVIAN | 2012.12.04 | PART NO./料號 | THICKNESS/厚度 | SCALE/比例 | SIZE/圖號 | UNIT/單位 |
| APPROVED BY/核准 | DATE/日期 | CL8.4-QGD-400T | 0.08 mm | 12:1 | A4 | mm |
| JASON | 2012.12.04 | MATERIAL/材質 | | ANGLE OF VIEW/視角 | SHEET/頁碼 | REV/版本 |
| PACKAGE/包裝 | 10,000PCS/BAG | SINGLE SIDE GOLD PLATED STAINLESS STEEL SUS 304 | | 1 OF 1 | 1 OF 1 | B |