

4

3

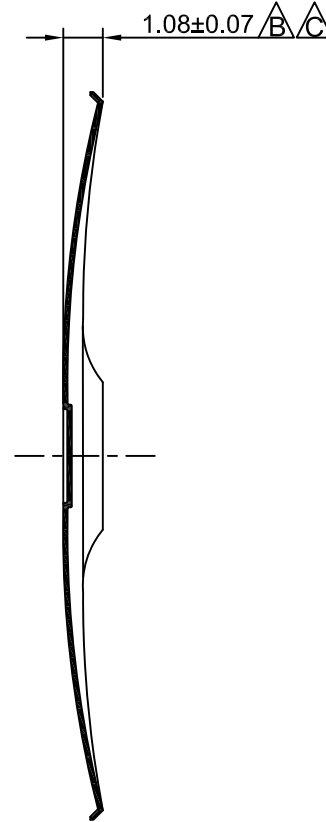
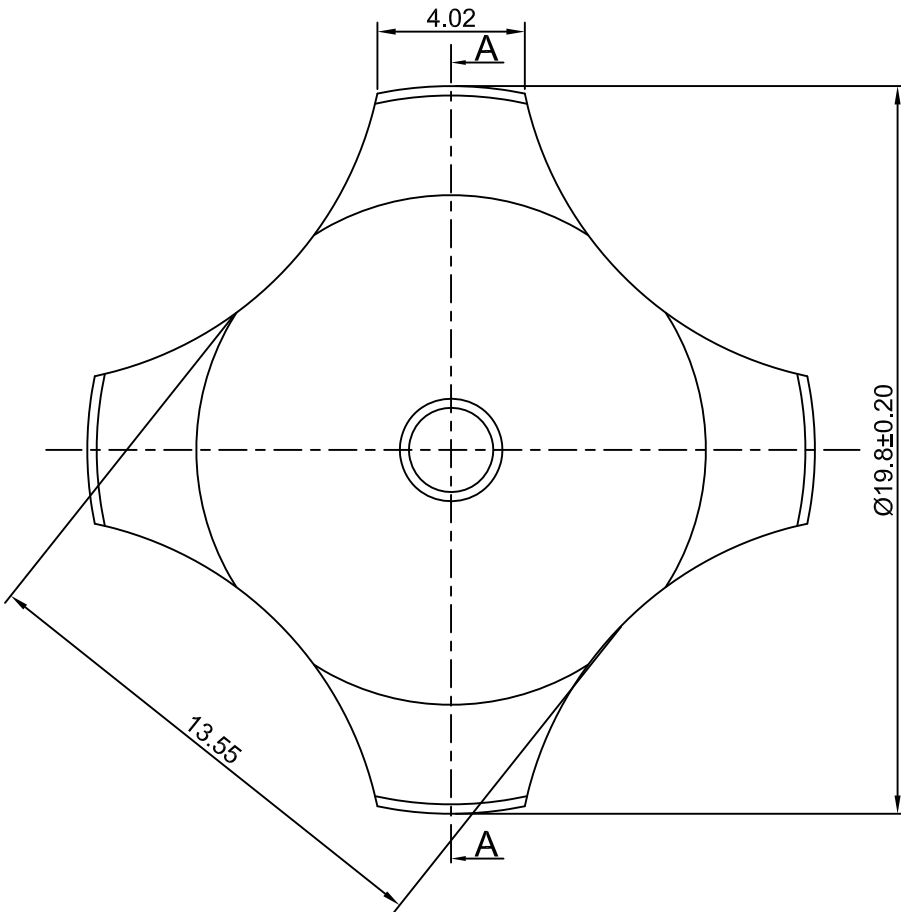
2

1

CROWN LINK®

專業薄膜開關連接器第一品牌

ROHS



◆ SPECIFICATIONS

TRIP FORCE: 400 ± 30 g

CLICK RATIO: MIN 40 %

◆ TESTING CONDITIONS

FORCE TEST PROBE: HARD POINTED

LIFE TEST PROBE: RB 60° SILICON ROUND HEAD

LIFE TEST FORCE: 475 g

LIFE TEST SPEED: 180 CYCLE / MIN

BURR: MAX 0.05 MM

UNLESS OTHERWISE SPECIFIED TESTING METHOD ACCORDING TO CROWNLINK STANDARD PROCEDURE

SECTION A - A

C	NEW DRAWING FORMAT & CORRECT DOME HEIGHT TOLERANCE	ANNIE	2012.07.25
B	CONVERT TO NEW DRAWING FORMAT & REVISE DOME HEIGHT	Vivian	2007.02.03
A	FIRST DRAWING	Vivian	2005.06.12
REV/版本	MODIFIED CONTENT /變更內容	DRAWN/繪圖	DATE/日期

X.XX ±0.10

TOLERANCE RANGE/公差範圍

DRAWN/繪圖 ANNIE	DATE/日期 2012.07.25	CROWN LINK® THE LEADING MANUFACTURER OF FPC & FFC CONNECTOR, HOUSING AND DOME.				
CHECK BY/審查 VIVIAN	DATE/日期 2012.07.25	PRODUCT NAME/品名 METAL DOME				
APPROVED BY/核准 JASON	DATE/日期 2012.07.25	PART NO./料號 CL20-QND-400T	THICKNESS/厚度 0.12 mm	SCALE/比例 5:1	SIZE/圖號 A4	UNIT/單位 mm
PACKAGE/包裝 10,000PCS/BAG		MATERIAL/材質 DOUBLE SIDE NICKEL PLATED STAINLESS STEEL SUS 304		ANGLE OF VIEW/視角 	SHEET/頁碼 1 OF 1	REV/版本 C

D

D

C

C

B

B

A

A