

4

3

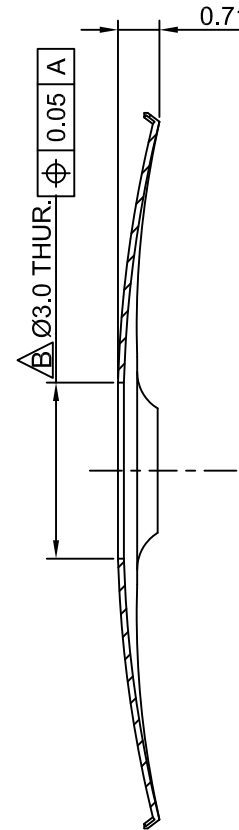
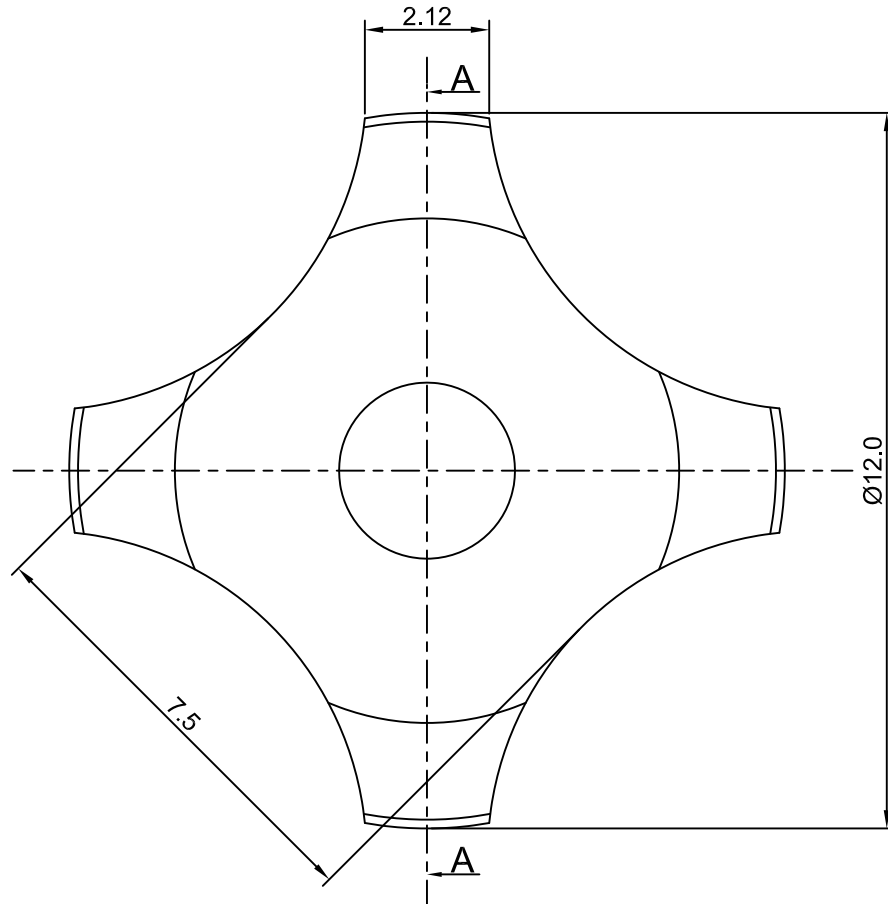
2

1

# CROWN LINK<sup>®</sup>

專業薄膜開關連接器第一品牌

ROHS



SECTION A - A

- ◆ SPECIFICATIONS
  - TRIP FORCE: 400 ± 30 g
  - CLICK RATIO: MIN 60 %
- ◆ TESTING CONDITIONS
  - FORCE TEST PROBE: HARD POINTED
  - LIFE TEST PROBE: RB 60° SILICON ROUND HEAD
  - LIFE TEST FORCE: 475 g
  - LIFE TEST SPEED: 180 CYCLE / MIN
  - BURR: MAX 0.05 MM
  - UNLESS OTHERWISE SPECIFIED TESTING METHOD ACCORDING TO CROWNLINK STANDARD PROCEDURE

				X.XX ±0.10 TOLERANCE RANGE/公差範圍
A	FIRST DRAWING	ANNIE	2013.09.13	
REV/版本	MODIFIED CONTENT /變更內容	DRAWN/繪圖	DATE/日期	

DRAWN/繪圖	ANNIE	DATE/日期	2013.09.13	<b>CROWN LINK<sup>®</sup> THE LEADING MANUFACTURER OF FPC &amp; FFC CONNECTOR, HOUSING AND DOME.</b>				
CHECK BY/審查	VIVIAN	DATE/日期	2013.09.13	PRODUCT NAME/品名 METAL DOME				
APPROVED BY/核准	JASON	DATE/日期	2013.09.13	PART NO./料號	THICKNESS/厚度	SCALE/比例	SIZE/圖號	UNIT/單位
PACKAGE/包裝	10,000PCS/BAG			CL12-QSH-400T	0.11 mm	8:1	A4	mm
				MATERIAL/材質		ANGLE OF VIEW/視角	SHEET/頁碼	REV/版本
				STAINLESS STEEL SUS 304		1 OF 1	1 OF 1	A

D

D

C

C

B

B

A

A