

4

3

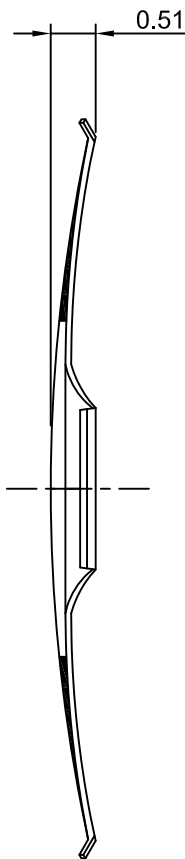
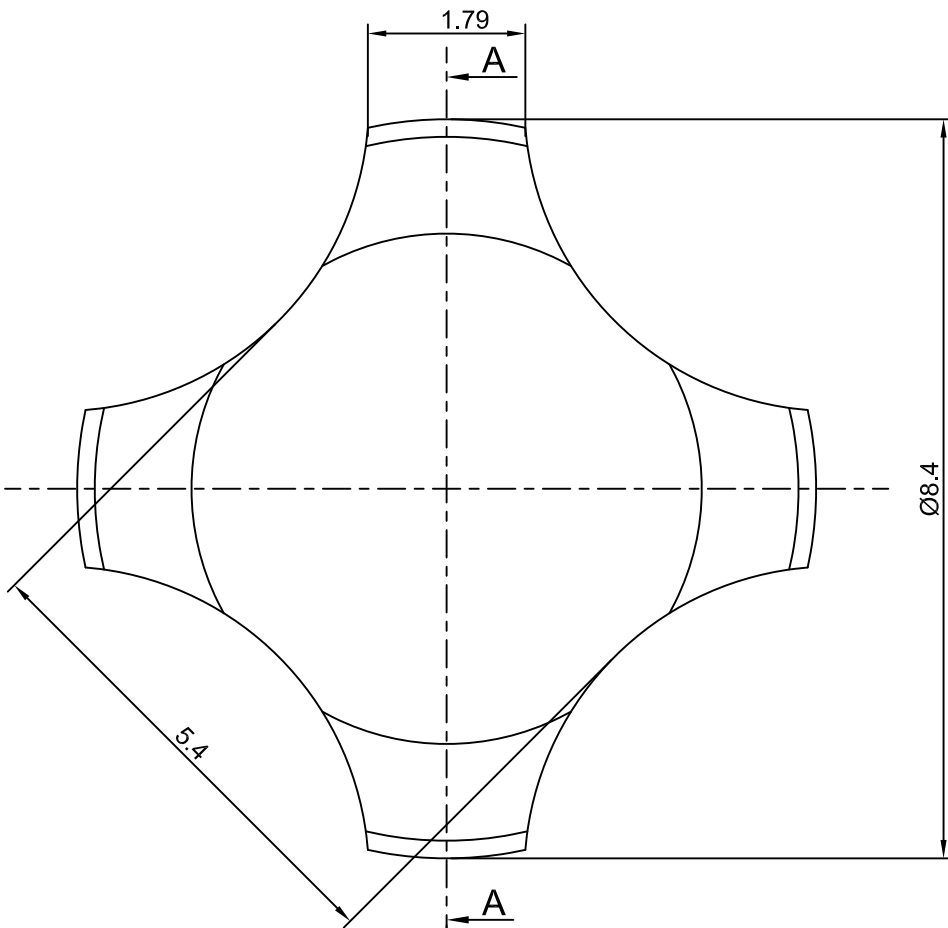
2

1

CROWN LINK[®]

專業薄膜開關連接器第一品牌

ROHS



- ◆ SPECIFICATIONS
 - TRIP FORCE: 320 ± 30 g
 - CLICK RATIO: MIN 45 %
- ◆ TESTING CONDITIONS
 - FORCE TEST PROBE: HARD POINTED
 - LIFE TEST PROBE: RB 60° SILICON ROUND HEAD
 - LIFE TEST FORCE: 385 g
 - LIFE TEST SPEED: 180 CYCLE / MIN
 - BURR: MAX 0.05 MM
 - UNLESS OTHERWISE SPECIFIED TESTING METHOD ACCORDING TO CROWNLINK STANDARD PROCEDURE

SECTION A - A

				X.X ±0.10
A	FIRST DRAWING	ANNIE	2013.03.01	
REV/版本	MODIFIED CONTENT /變更內容	DRAWN/繪圖	DATE/日期	
				TOLERANCE RANGE/公差範圍

DRAWN/繪圖	DATE/日期	CROWN LINK[®] THE LEADING MANUFACTURER OF FPC & FFC CONNECTOR, HOUSING AND DOME.						
CHECK BY/審查	DATE/日期	PRODUCT NAME/品名						
APPROVED BY/核准	DATE/日期	METAL DOME						
PACKAGE/包裝	DATE/日期	PART NO./料號	THICKNESS/厚度	SCALE/比例	SIZE/圖號	UNIT/單位		
		JASON	2013.03.01	CL8.4-QSN-320T	0.08 mm	12:1	A4	mm
		10,000PCS/BAG		MATERIAL/材質	ANGLE OF VIEW/視角	SHEET/頁碼	REV/版本	
				STAINLESS STEEL SUS 304		1 OF 1	A	

D

D

C

C

B

B

A

A