

4

3

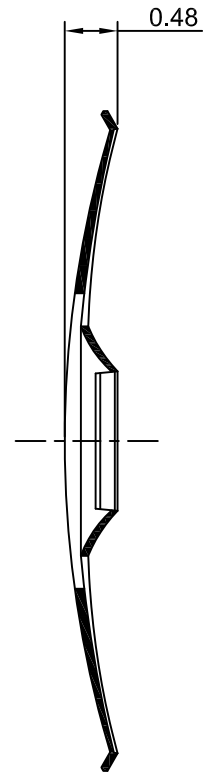
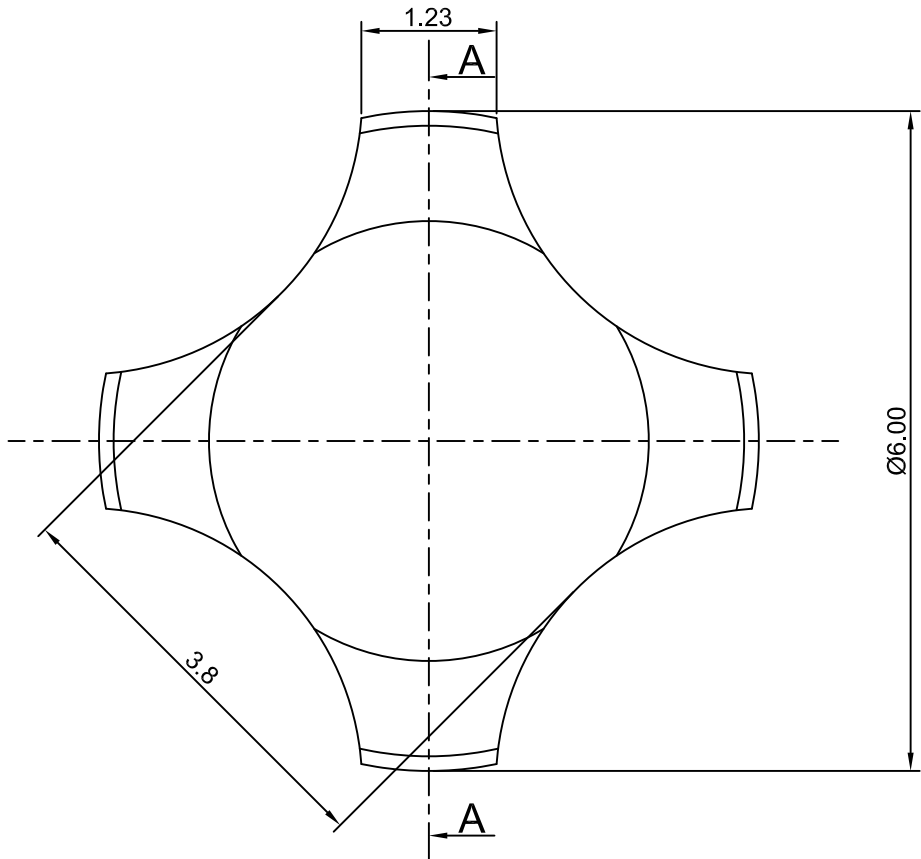
2

1

CROWN LINK[®]

專業薄膜開關連接器第一品牌

ROHS



◆ SPECIFICATIONS

TRIP FORCE: 230 ± 30 g
 CLICK RATIO: MIN 50 %

◆ TESTING CONDITIONS

FORCE TEST PROBE: HARD POINTED
 LIFE TEST PROBE: RB 60° SILICON ROUND HEAD
 LIFE TEST FORCE: 285 g
 LIFE TEST SPEED: 180 CYCLE / MIN
 BURR: MAX 0.05 MM
 UNLESS OTHERWISE SPECIFIED TESTING METHOD
 ACCORDING TO CROWNLINK STANDARD PROCEDURE

SECTION A-A

				X.X ±0.10 X.XX ±0.05
B	NEW DRAWING FORMAT	ANNIE	2013.02.27	
A	FIRST DRAWING	ANNIE	2012.04.15	
REV/版本	MODIFIED CONTENT /變更內容	DRAWN/繪圖	DATE/日期	TOLERANCE RANGE/公差範圍

DRAWN/繪圖	DATE/日期	CROWN LINK[®] THE LEADING MANUFACTURER OF FPC & FFC CONNECTOR, HOUSING AND DOME.						
ANNIE	2013.02.27	PRODUCT NAME/品名 METAL DOME						
CHECK BY/審查	DATE/日期	PART NO./料號	THICKNESS/厚度	SCALE/比例	SIZE/圖號	UNIT/單位		
VIVIAN	2013.02.27	CL6-QNN-230T	0.06 mm	15:1	A4	mm		
APPROVED BY/核准	DATE/日期	MATERIAL/材質	ANGLE OF VIEW/視角	SHEET/頁碼	REV/版本			
JASON	2013.02.27	DOUBLE SIDE NICKEL PLATED STAINLESS STEEL SUS 304	⊕	1 OF 1	B			
PACKAGE/包裝	10,000PCS/BAG							

D

D

C

C

B

B

A

A