

4

3

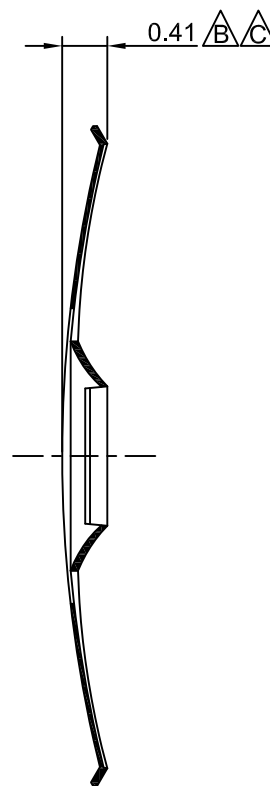
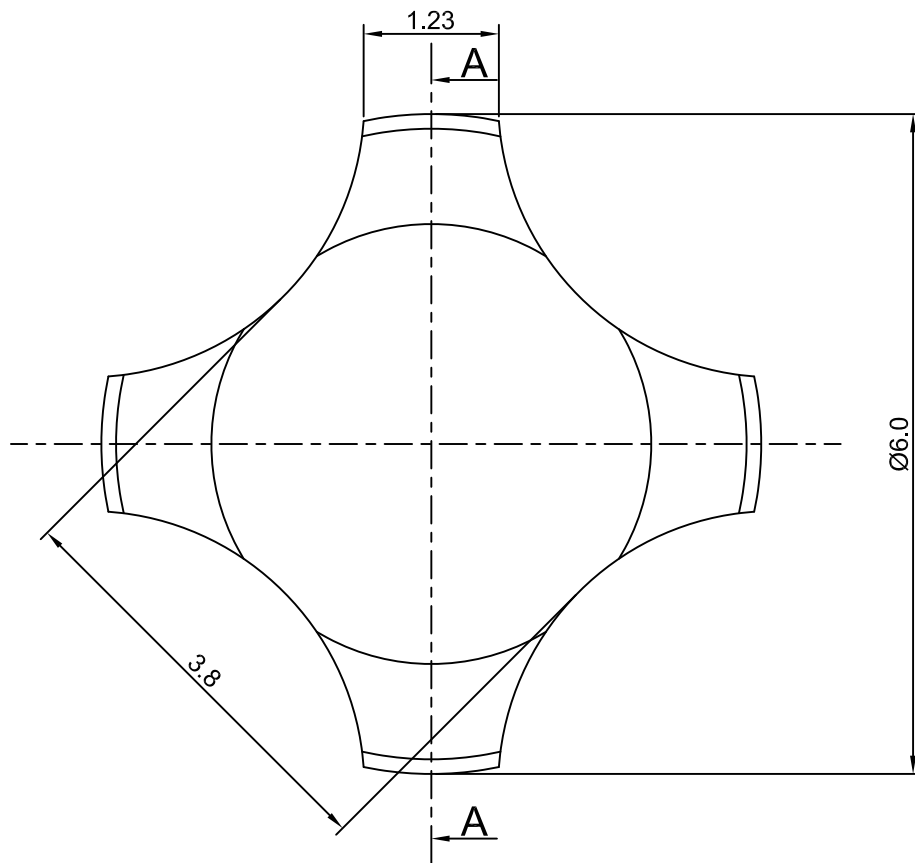
2

1

# CROWN LINK<sup>®</sup>

專業薄膜開關連接器第一品牌

ROHS



SECTION A-A

◆ SPECIFICATIONS

TRIP FORCE: 170 ± 30 g  
CLICK RATIO:  $\Delta$  MIN 40 %

◆ TESTING CONDITIONS

FORCE TEST PROBE: HARD POINTED  
LIFE TEST PROBE: RB 60° SILICON ROUND HEAD  
LIFE TEST FORCE: 220 g  
LIFE TEST SPEED: 180 CYCLE / MIN  
BURR: MAX 0.05 MM  
UNLESS OTHERWISE SPECIFIED TESTING METHOD  
ACCORDING TO CROWNLINK STANDARD PROCEDURE

REV/版本	MODIFIED CONTENT /變更內容	DRAWN/繪圖	DATE/日期	TOLERANCE RANGE/公差範圍
D	REVISE DOME CLICK RATIO	ANNIE	2013.02.27	X.XX ±0.10
C	NEW DRAWING FORMAT & REVISE DOME HEIGHT	ANNIE	2012.03.02	
B	CONVERT TO NEW DRAWING & REVISE DOME HEIGHT	ANNIE	2011.04.15	

DRAWN/繪圖	DATE/日期	THE LEADING MANUFACTURER OF FPC & FFC CONNECTOR, HOUSING AND DOME.				
ANNIE	2013.02.28	CROWN LINK <sup>®</sup> METAL DOME				
CHECK BY/審查	DATE/日期	PRODUCT NAME/品名				
VIVIAN	2013.02.28	METAL DOME				
APPROVED BY/核准	DATE/日期	PART NO./料號	THICKNESS/厚度	SCALE/比例	SIZE/圖號	UNIT/單位
JASON	2013.02.28	CL6-QNN-170T	0.06 mm	15:1	A4	mm
PACKAGE/包裝		MATERIAL/材質	ANGLE OF VIEW/視角	SHEET/頁碼	REV/版本	
	10,000PCS/BAG	DOUBLE SIDE NICKEL PLATED STAINLESS STEEL SUS 304	$\phi$	1 OF 1	D	