

4

3

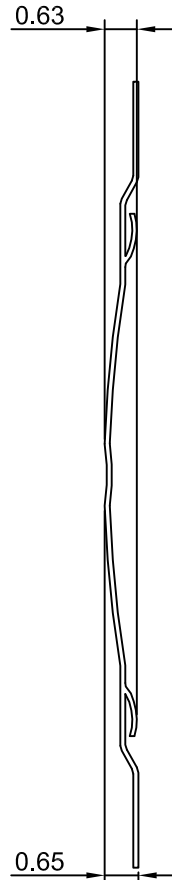
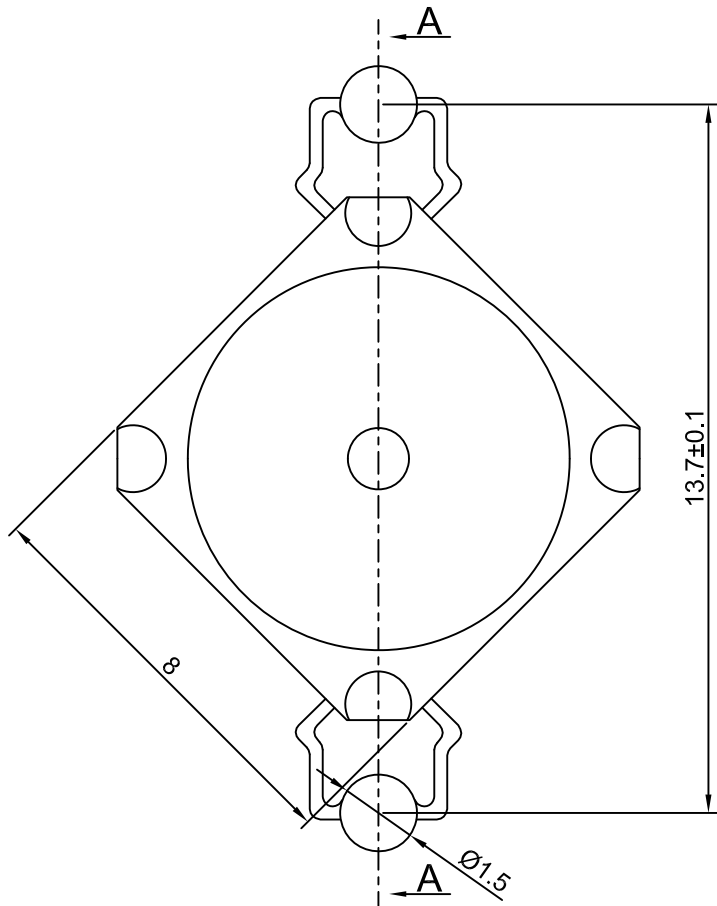
2

1

CONNTECH

康尼特

ROHS



SECTION-A-A

- ◆ SPECIFICATIONS
TRIP FORCE: 280 ± 30 g
- ◆ TESTING CONDITIONS
FORCE TEST PROBE: HARD POINTED
LIFE TEST PROBE: 0.1MM WOLFRAM STEEL
LIFE TEST FORCE: 420
LIFE TEST SPEED: 120 CYCLE / MIN
UNLESS OTHERWISE SPECIFIED TESTING METHOD
ACCORDING TO CONNTECH STANDARD PROCEDURE

				X.X ±0.20
				X.XX ±0.10
REV/版本	MODIFIED CONTENT /變更內容	DRAWN/繪圖	DATE/日期	TOLERANCE RANGE/公差範圍

DRAWN/繪圖 JUDY	DATE/日期 2022.11.09	CONNTECH THE LEADING MANUFACTURER OF FPC & FFC CONNECTOR, HOUSING AND DOME. 康尼特				
CHECK BY/審查 VIVIAN	DATE/日期 2022.11.09	PRODUCT NAME/品名 METAL DOME				
APPROVED BY/核准 JASON	DATE/日期 2022.11.09	PART NO./料號 13.7-QNDL-280J	THICKNESS/厚度 0.1 mm	SCALE/比例 4:1	SIZE/圖號 A4	UNIT/單位 mm
PACKAGE/包裝	10,000PCS/BAG	MATERIAL/材質 DOUBLE SIDE NICKEL PLATED STAINLESS STEEL SUS 301		ANGLE OF VIEW/視角 	SHEET/頁碼 1 OF 1	REV/版本 A