

4

3

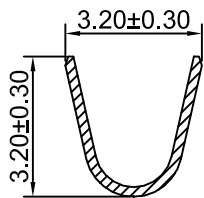
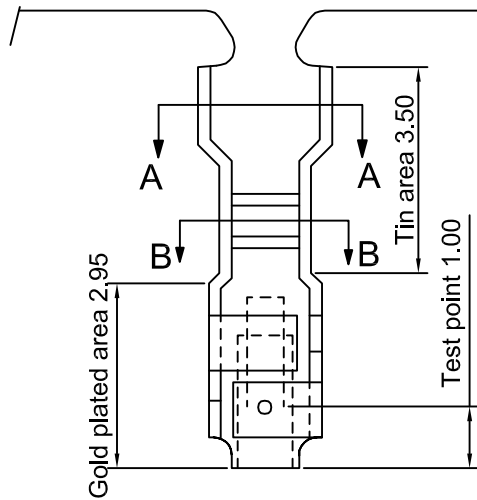
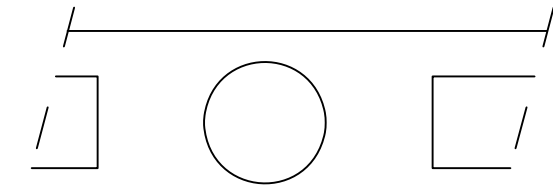
2

1

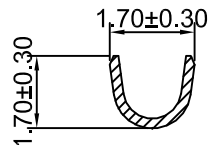
# CROWN LINK<sup>®</sup>

專業薄膜開關連接器第一品牌

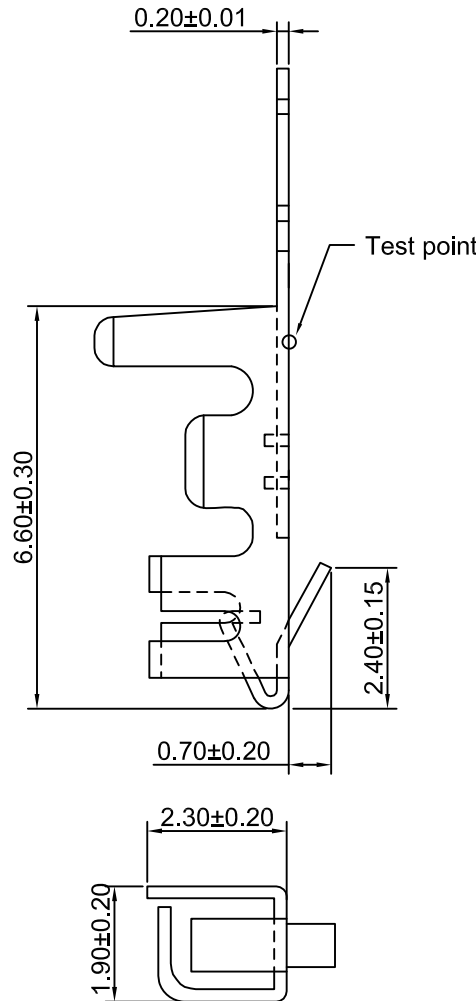
ROHS



A-A SECTION



B-B SECTION

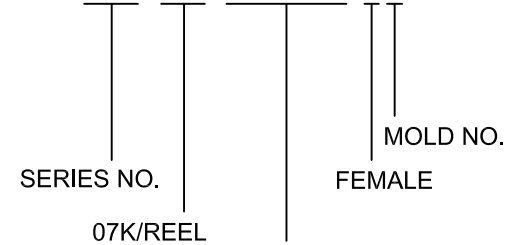


- ◆ FOR 2501H/2512HL SERIES HOUSING
- ◆ SPECIFICATIONS
  - VOLTAGE RATING: 250V AC,DC
  - CURRENT RATING: 3A AC,DC
  - WITHSTANDING VOLTAGE: 800V AC / MINUTE
  - INSULATION RESISTANCE: 1000 MΩ MIN
  - CONTACT RESISTANCE: 10mΩ MAX
  - TEMPERATURE RANGE: -40°C~+105°C

◆ APPLICABLE WIRE: AWG24#-28#

◆ PART NO.

2512 - 07K - 0T(0G/MT) - F P



0T:TIN PLATED.  
 0G:GOLD PLATED.  
 MT:MATTE TIN PLATED.  
 OTHER PLATINGS ON REQUEST.

TOLERANCE RANGE/公差範圍

X: ±0.50 X": ±1"  
 X: ±0.30 X": ±0.11"  
 XX: ±0.20 XX": ±0.01"  
 XXX: ±0.05 XXX": ±0.005"

DRAWN/繪圖 JUDY	DATE/日期 2022.10.19	<b>CROWN LINK<sup>®</sup> THE LEADING MANUFACTURER OF FPC &amp; FFC CONNECTOR, HOUSING AND DOME.</b>			
CHECK BY/審查 VIVIAN	DATE/日期 2022.10.19	PRODUCT NAME/品名 8.5mm PITCH CONNECTOR FOR CABLE			
APPROVED BY/核准 WENDY	DATE/日期 2022.10.19	PART NO./料號 2512-07K-0T(0G/MT)-FP	SCALE/比例 8:1	SIZE/圖號 A4	UNIT/單位 mm
PACKAGE/包裝	7,000PCS/REEL	MATERIAL/材質 PHOSPHOR BRONZE	ANGLE OF VIEW/視角 	SHEET/頁碼 1 OF 1	REV/版本 A

REV/版本	MODIFIED CONTENT /變更內容	DRAWN/繪圖	DATE/日期