

4

3

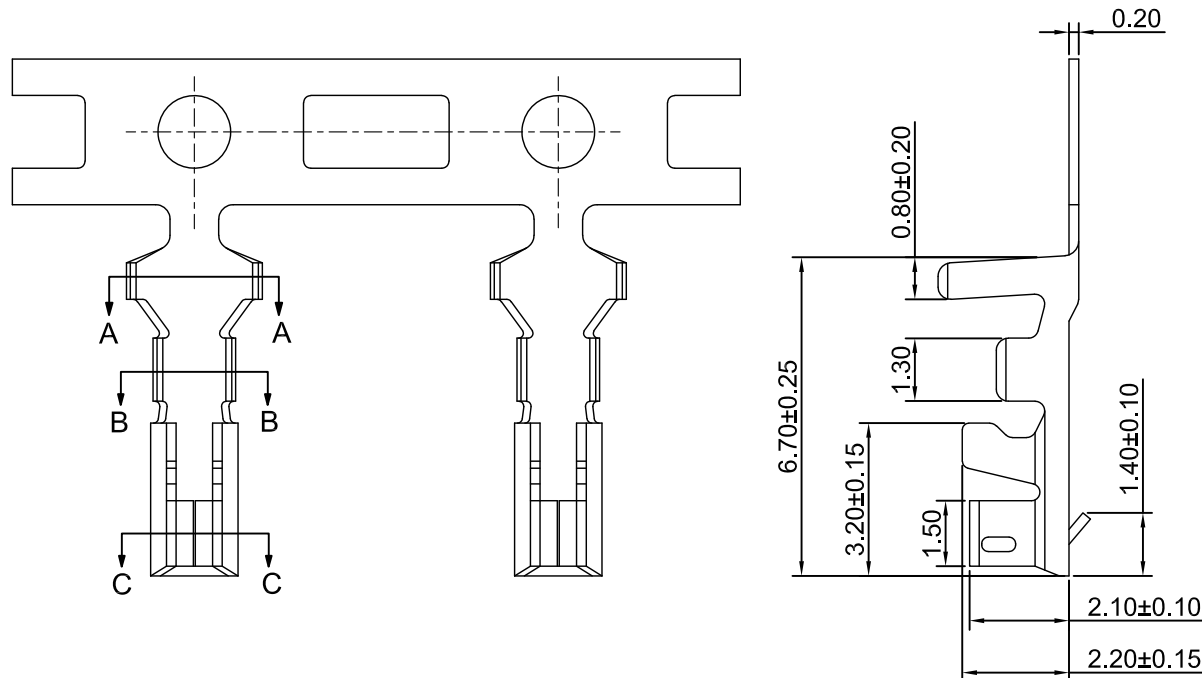
2

1

CROWN LINK[®]

專業薄膜開關連接器第一品牌

ROHS



◆ FOR 2506HL SERIES HOUSING

◆ SPECIFICATIONS

VOLTAGE RATING: 250V AC,DC

CURRENT RATING: 3A AC,DC

WITHSTANDING VOLTAGE: 1000V AC / MINUTE

INSULATION RESISTANCE: 1000 MΩ MIN

CONTACT RESISTANCE: 20mΩ MAX

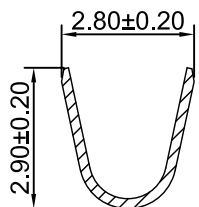
TEMPERATURE RANGE: -25°C~+85°C

◆ APPLICABLE WIRE: AWG22#~28#

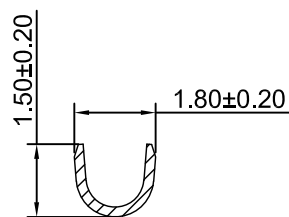
◆ PART NO.

2506 - 7.5K - 0T - F H

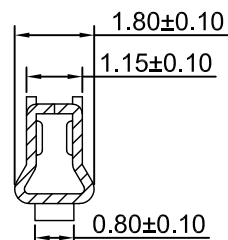
SERIES NO. 7.5K/REEL
MOLD NO. FEMALE
0T:TIN PLATED.



A-A SECTION



B-B SECTION



C-C SECTION

REV/版本	MODIFIED CONTENT /變更內容	DRAWN/繪圖	DATE/日期	TOLERANCE RANGE/公差範圍
				X: ±0.30 X*: ±2° X: ±0.30 X*: ±2° XX: ±0.20 XX*: ±1° XXX: ±0.10 XXX*: ±0.5°

DRAWN/繪圖	DATE/日期	CROWN LINK [®] THE LEADING MANUFACTURER OF FPC & FFC CONNECTOR, HOUSING AND DOME.			
JUDY	2023.10.13	PRODUCT NAME/品名 2.5mm PITCH CONNECTOR FOR CABLE(XA)			
CHECK BY/審查	DATE/日期	PART NO./料號	SCALE/比例	SIZE/圖號	UNIT/單位
VIVIAN	2023.10.13	2506-7.5K-0T-FH	8:1	A4	mm
APPROVED BY/核准	DATE/日期	MATERIAL/材質	ANGLE OF VIEW/視角	SHEET/頁碼	REV/版本
WENDY	2023.10.13	PHOSPHOR BRONZE	⊕	1 OF 1	A
PACKAGE/包裝	7,500PCS/REEL				