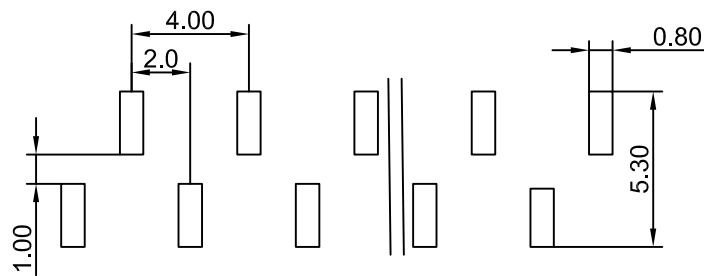
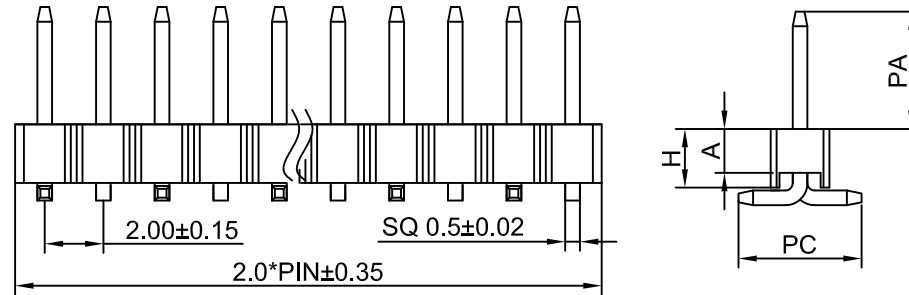
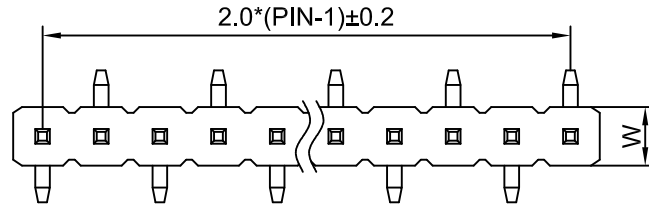


CROWN LINK®

專業薄膜開關連接器第一品牌

ROHS



PCB LAYOUT

◆ Specifications

- 1.Current Rating:2Amps
- 2.Insulation Resistance:1000 MΩ min
- 3.Dielectric withstanding Voltage: AC 500V
- 4.Contact Resistance:30 mΩ max
- 5.Operating Temperature:-25°C to+85°C
- 6.Contact Material: Brass
- 7.Insulation Material:As follows
- 8.Plated: As follows

◆ PART NO.

L205 XX-XX 2 X X XX X

2.0mm single row	PLASTIC HEIGHT H*W	PIN NO. 1~40	0=180° 1=90° 2=SMT	MATERIAL 1. PBT 3. NY6T 4. LCP 5. NY66 7. NY46 8. NY9T	PLATED 0. Au0.8u" 1. Au1u" 2. Au1.5u" 3. Au2u" 4. Au3u" 5. Au5u" 6. Au10u"	SERIES NO. 01~69:Without a column 70~99:With inside column	PACKAGE A=bag B=tubes C=tray D=reel
	15=1.5*2.0 20=2.0*2.0						

				LINER	ANGLES
				.0 ±0.30	0.° ±3°
A	FIRST DRAWING	MARY	2017.08.31	.00 ±0.20	.0° ±2°
REV/版本	MODIFIED CONTENT /變更內容	DRAWN/繪圖	DATE/日期	.000 ±0.10	.00° ±1°
				TOLERANCE RANGE/公差範圍	

DRAWN/繪圖	DATE/日期	CROWN LINK® THE LEADING MANUFACTURER OF FPC & FFC CONNECTOR, HOUSING AND DOME.			
MARY	2017.08.31	PRODUCT NAME/品名			
CHECK BY/審查	DATE/日期	PH2.0*H 1xNP SMT SINGLE ROW PIN HEADER			
VIVIAN	2017.08.31	PART NO./料號	PIN NUMBER/針數	SCALE/比例	SIZE/圖號
APPROVED BY/核准	DATE/日期	L205XX-XX2XXXXX	01P-40P		A4
WENDY	2017.08.31	MATERIAL/材質	COLOR/顏色	ANGLE OF VIEW/視角	UNIT/單位
PACKAGE/包裝			BLACK COLOR		mm
				SHEET/頁碼	REV/版本
				1 OF 1	A